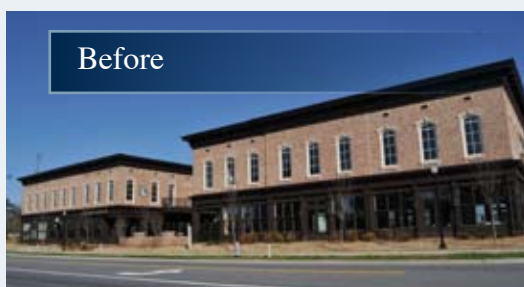
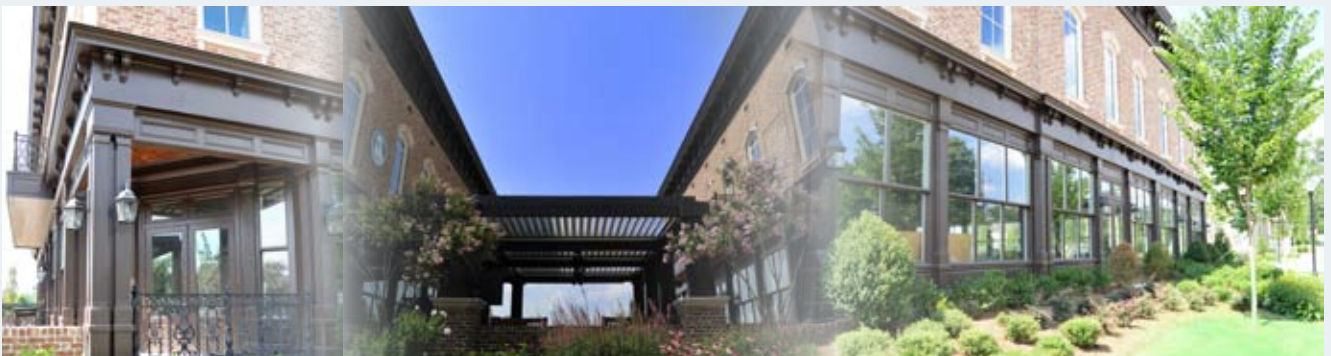
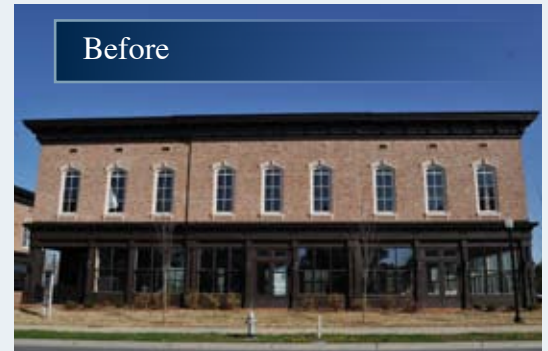


CRABAPPLE MERCANTILE EXCHANGE



Located in the heart of historic Downtown Crabapple, the Crabapple Mercantile Exchange merges charm and practicality in these four quintessential buildings.

Designed as a mixed-use development and positioned along Crabapple Road near the intersection of Birmingham Highway, the Mercantile Exchange comprises approximately 36,000 sq. ft., offering the finest goods and services in the vicinity. The intricate attention to detail, the dark wood paneling and the wrought iron banisters are only a few of the many features that make the Crabapple Mercantile Exchange the distinctive development in the area. Wrapping sidewalks, a partially canopied courtyard, and second-story balconies only serve to enhance the quaint character of the Mercantile Exchange.



Complementing the timeless feel of the Mercantile's architecture, the landscaping surrounding the development echoes the vibrant atmosphere within and accentuates the meticulous details of these structures. Whether business owner or merchant, the Crabapple Mercantile Exchange offers something for everyone.

